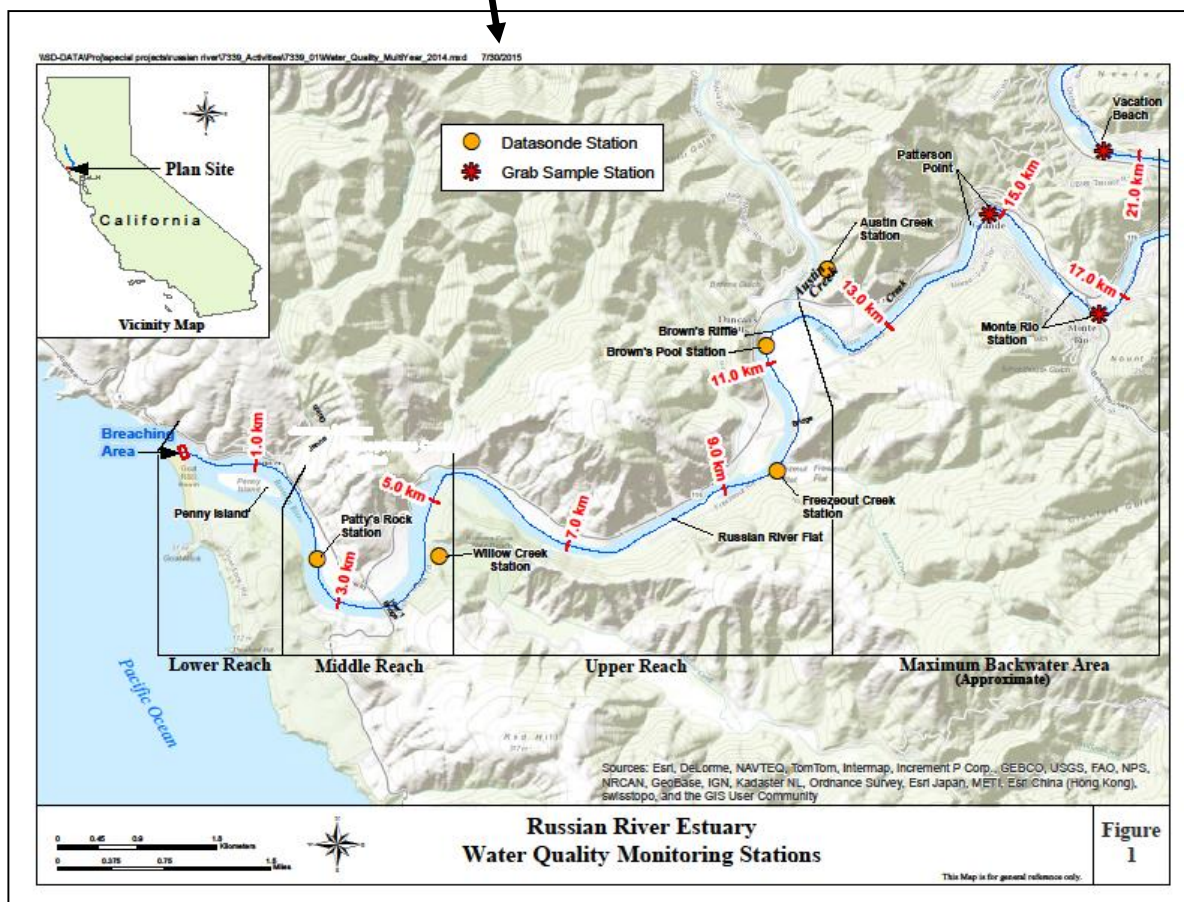
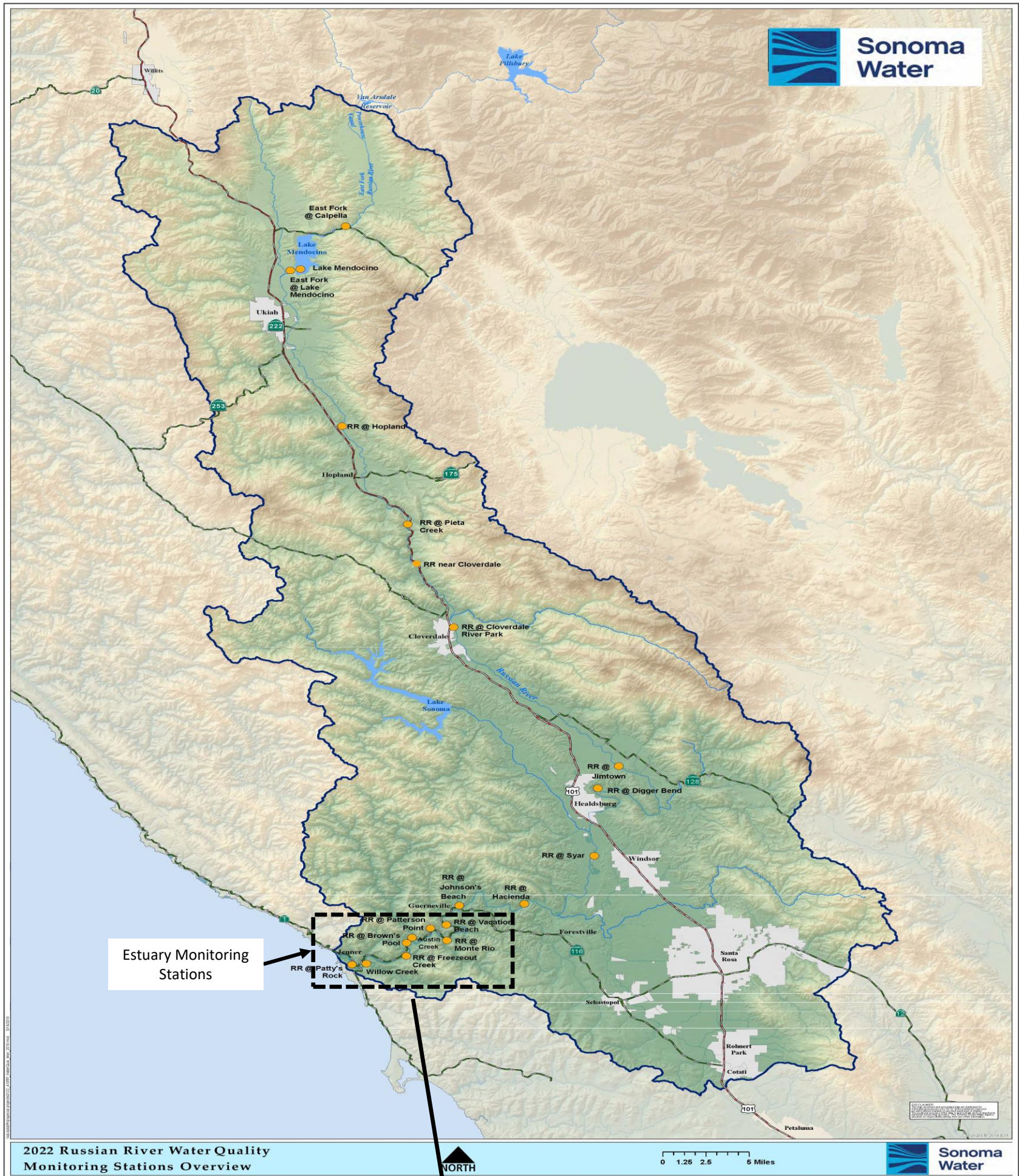




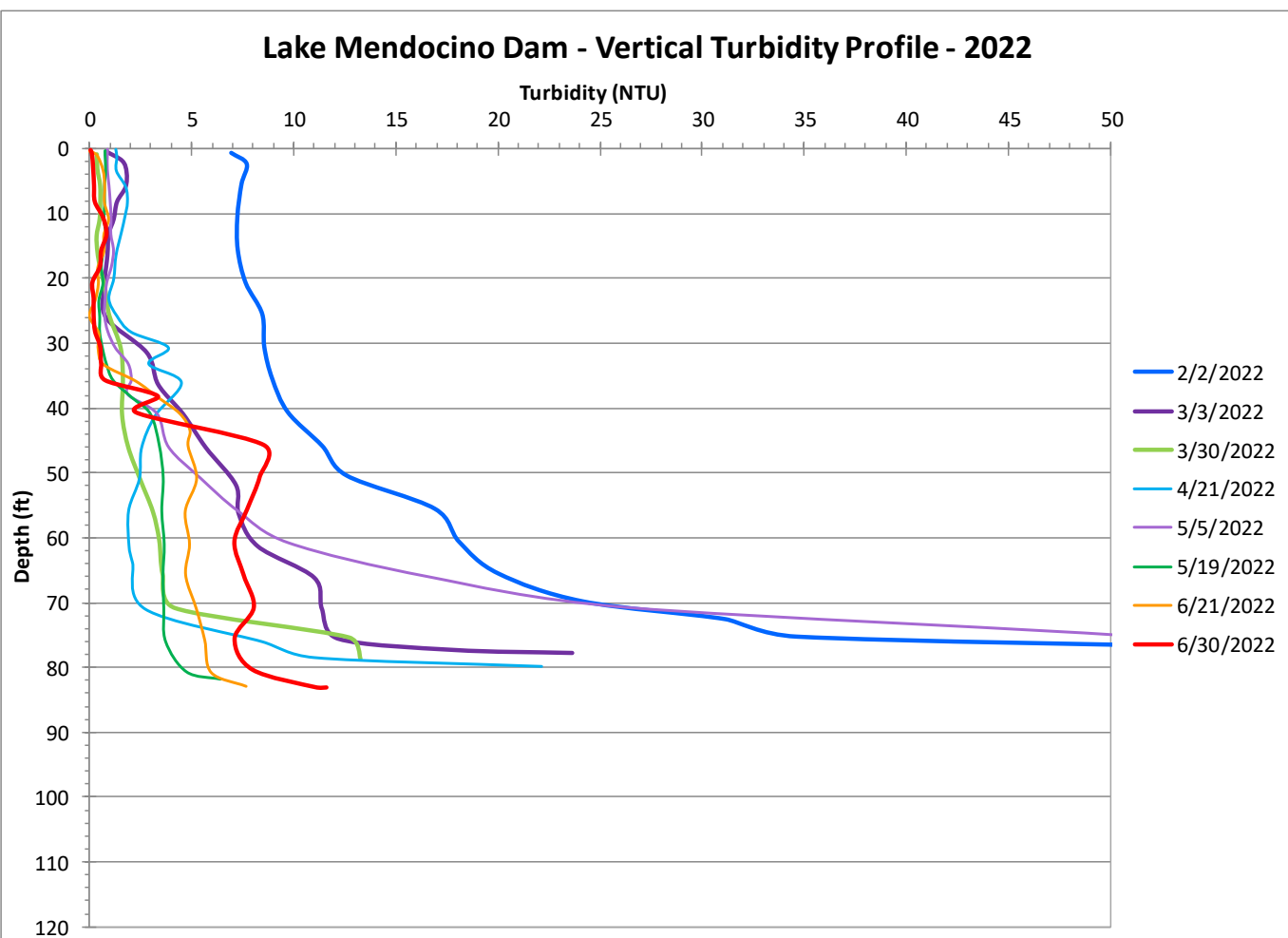
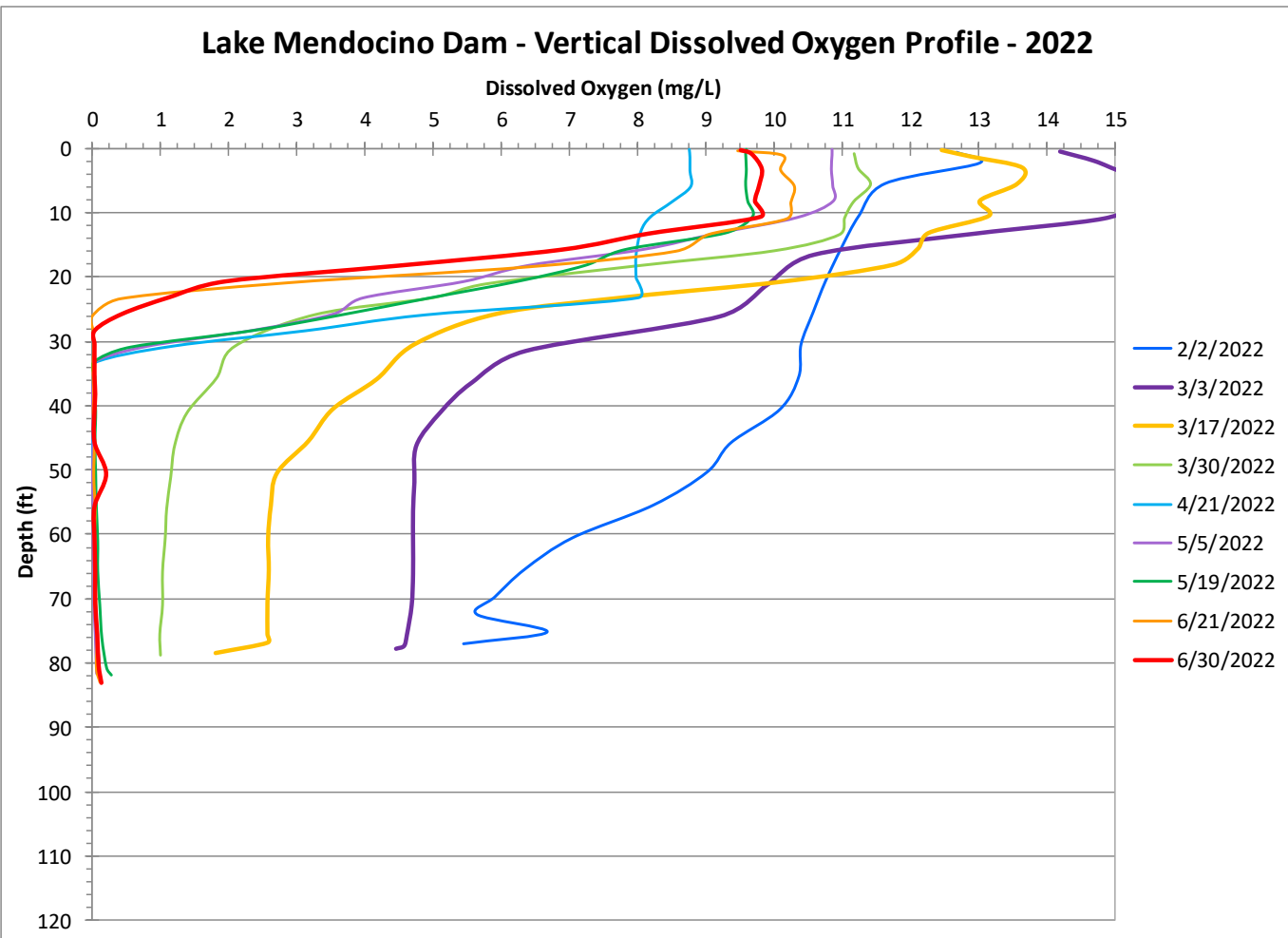
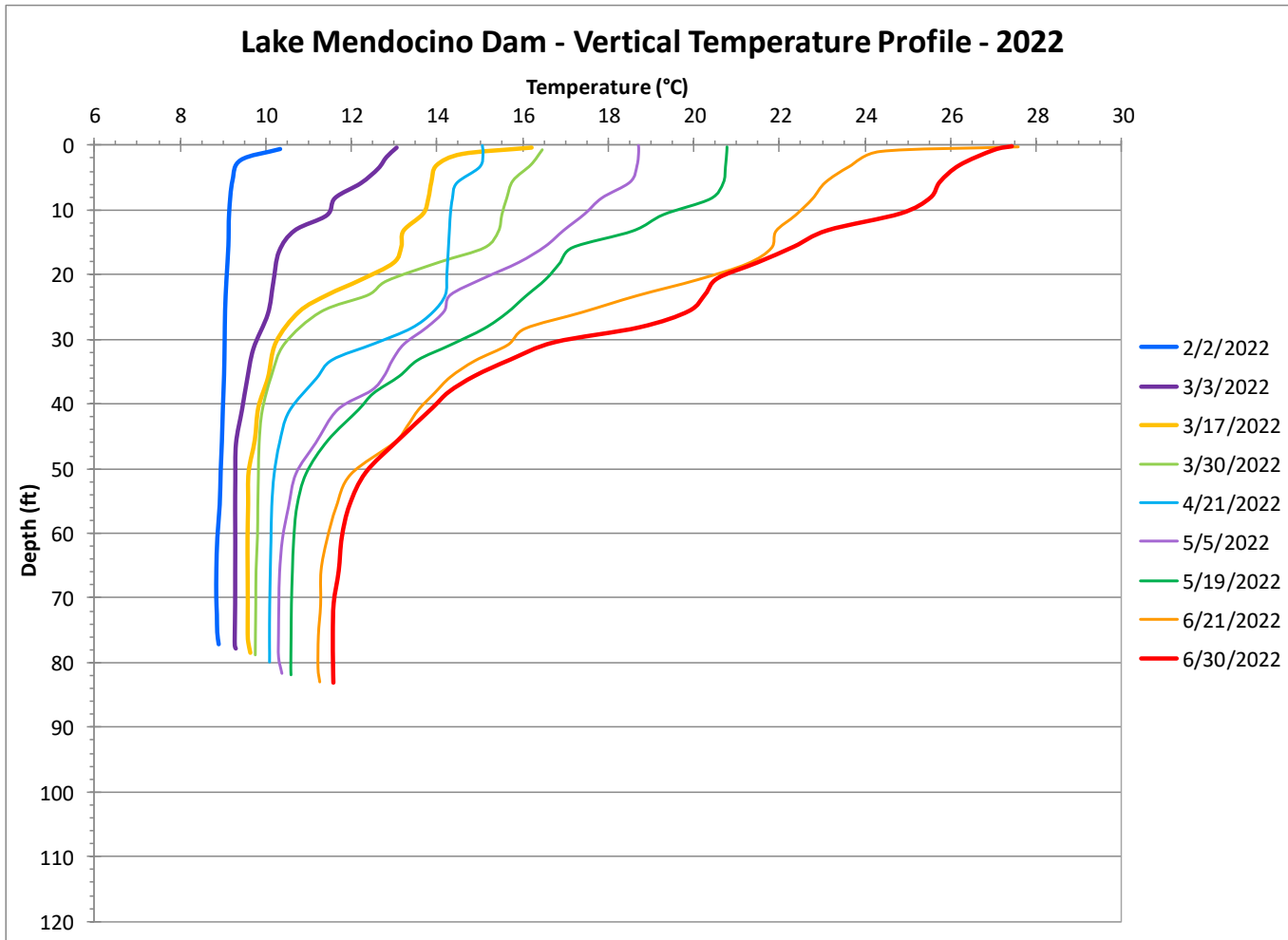
Sonoma Water

State Water Resources Control Board Temporary Urgency Change Order (6/17/2022) Russian River Water Quality Report July 08, 2022 - July 14, 2022



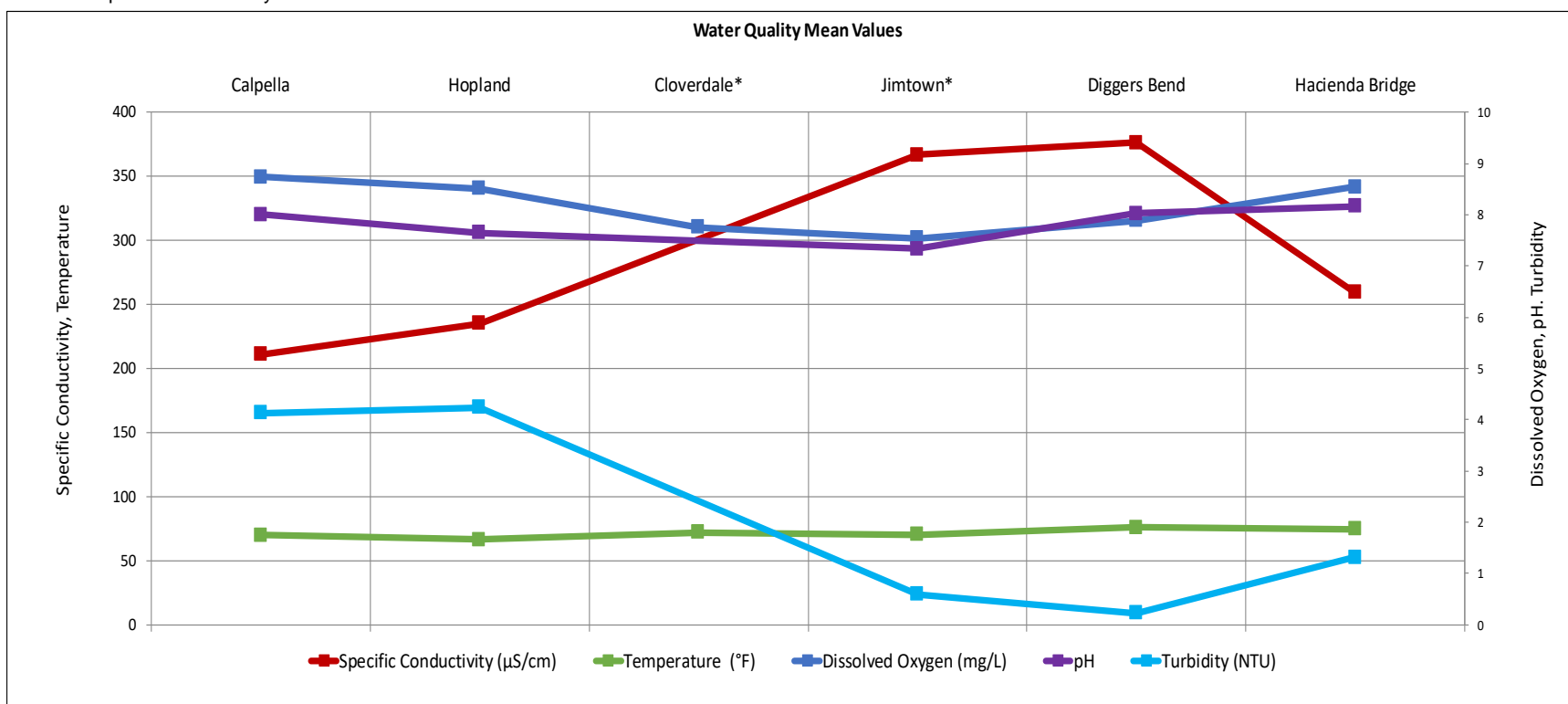
Lake Mendocino Water Quality Vertical Profiles (February 2 – June 30, 2022)

Provisional Data Subject to Revision



Russian River Water Quality (July 08, 2022 - July 14, 2022)
Provisional Data Subject to Revision

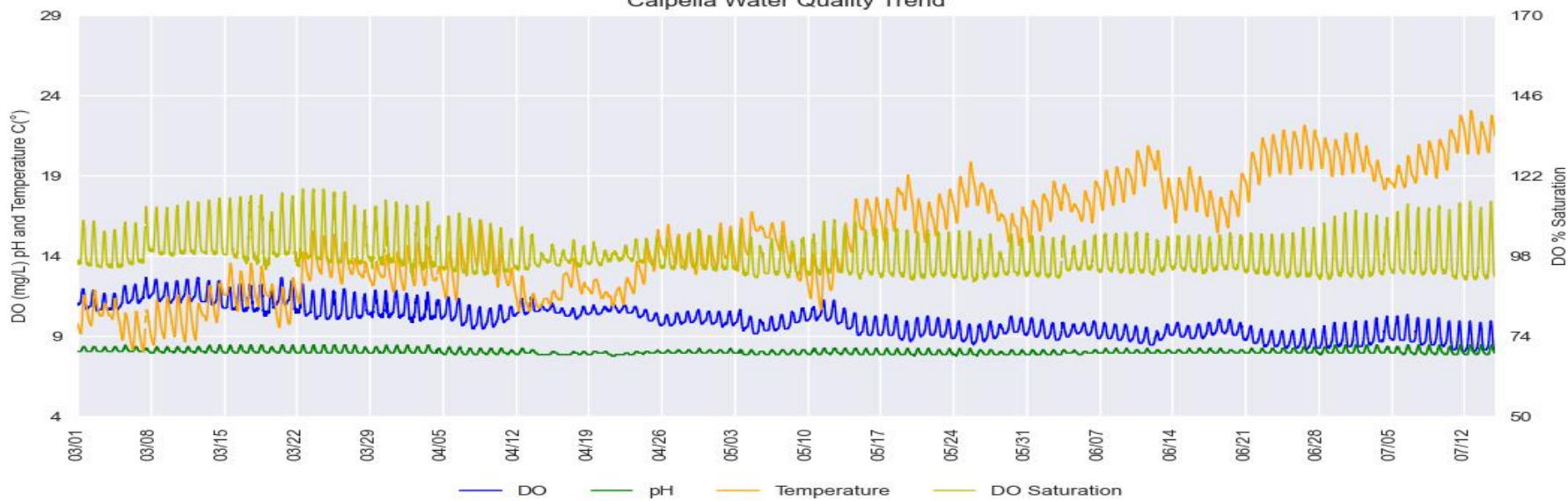
*Station operated seasonally



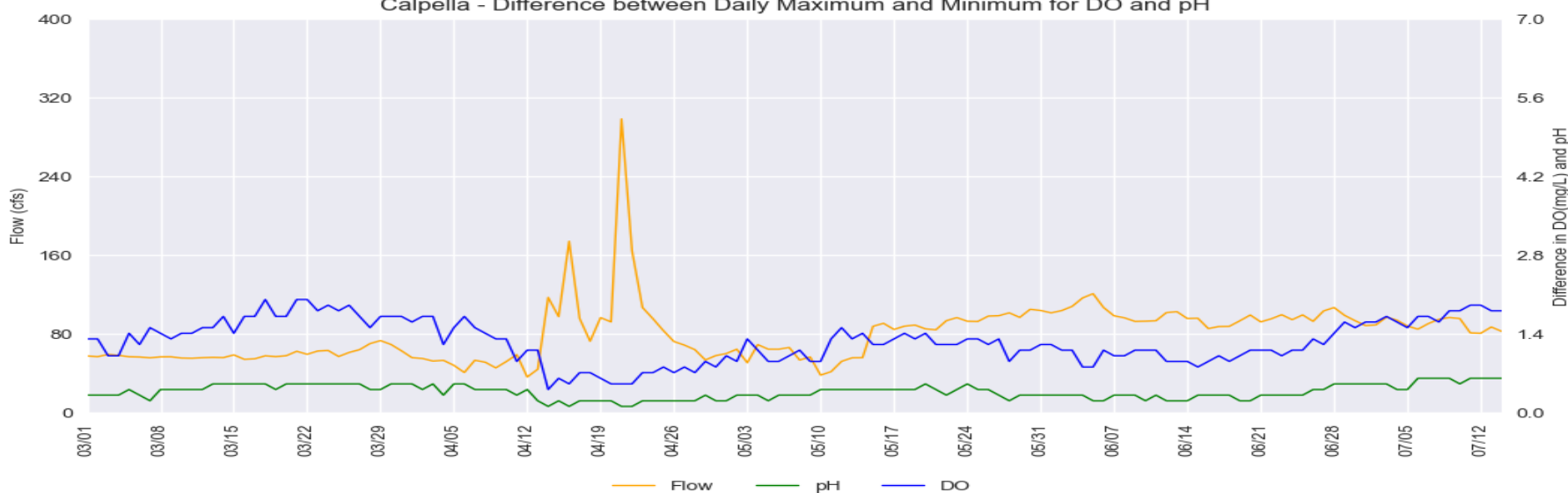
Russian River Water Quality (March 01, 2022 - July 14, 2022)
Provisional Data Subject to Revision

Calpella (East Fork Russian River)

Calpella Water Quality Trend



Calpella - Difference between Daily Maximum and Minimum for DO and pH

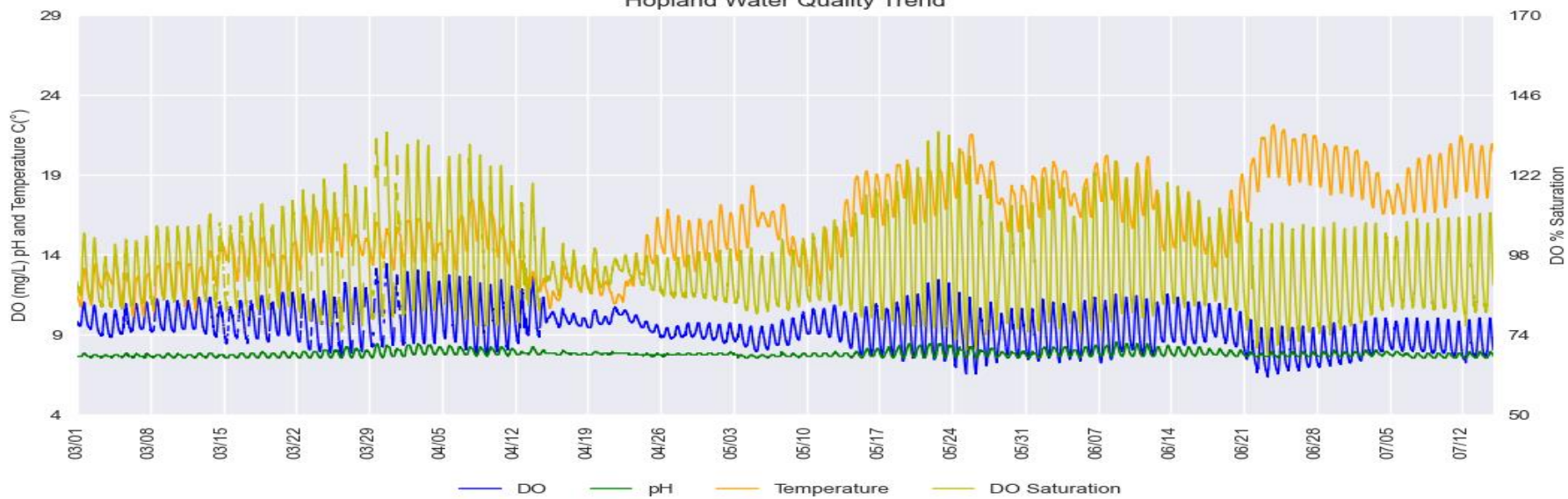


Russian River Water Quality (March 01, 2022 - July 14, 2022)

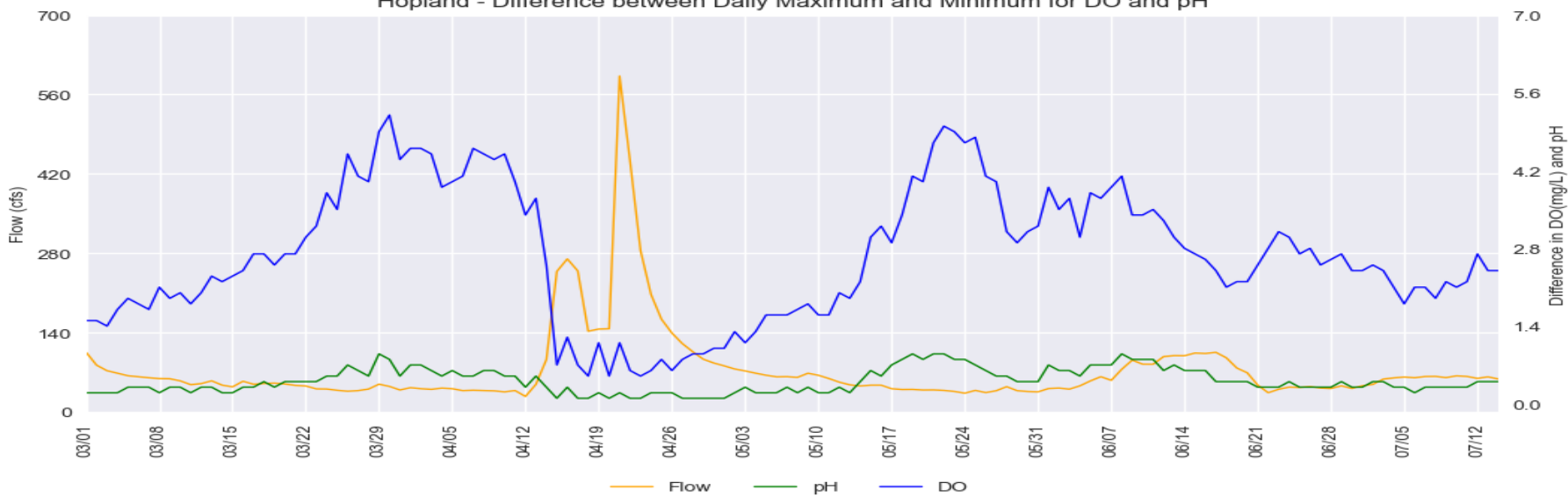
Provisional Data Subject to Revision

Hopland

Hopland Water Quality Trend

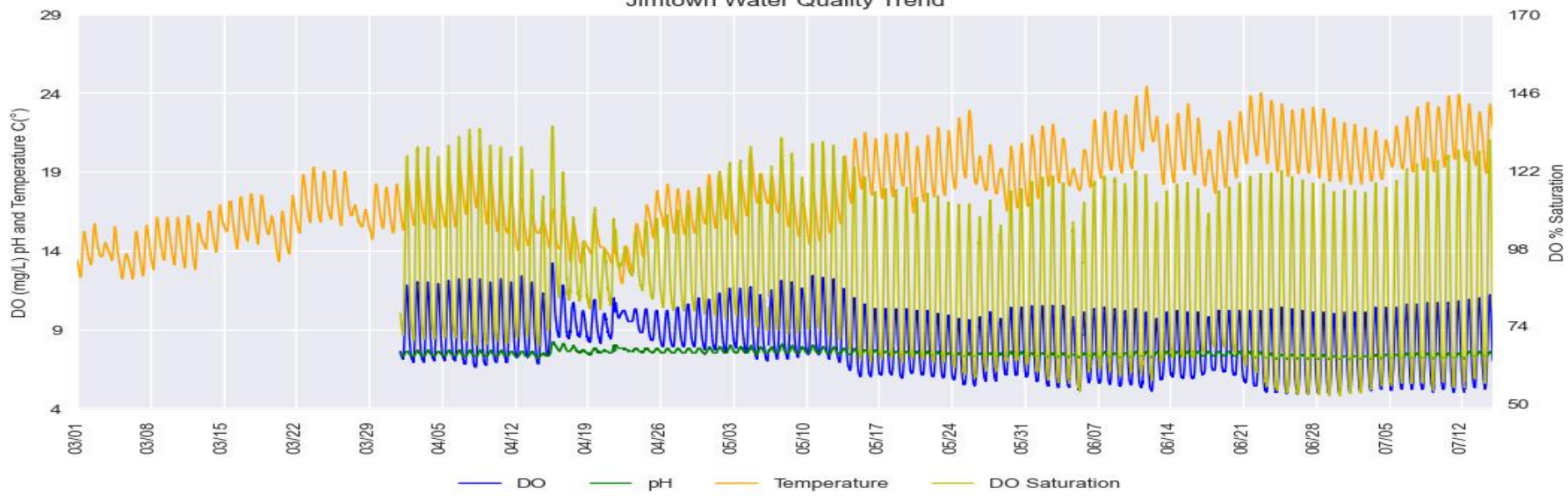


Hopland - Difference between Daily Maximum and Minimum for DO and pH

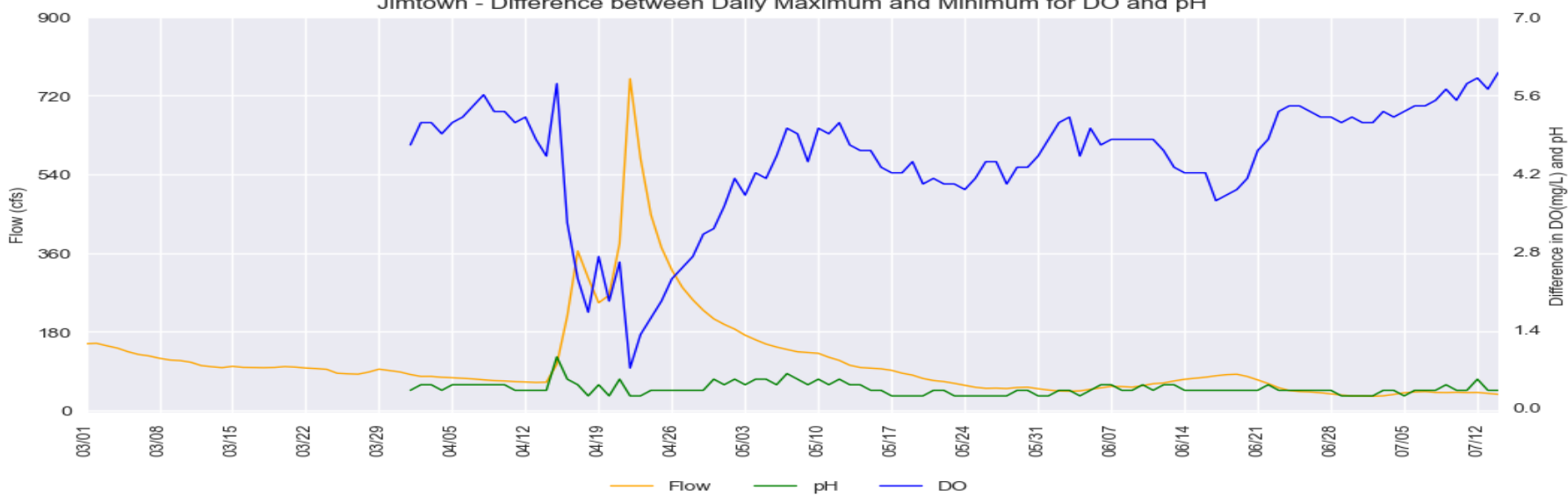


Jimtown

Jimtown Water Quality Trend



Jimtown - Difference between Daily Maximum and Minimum for DO and pH

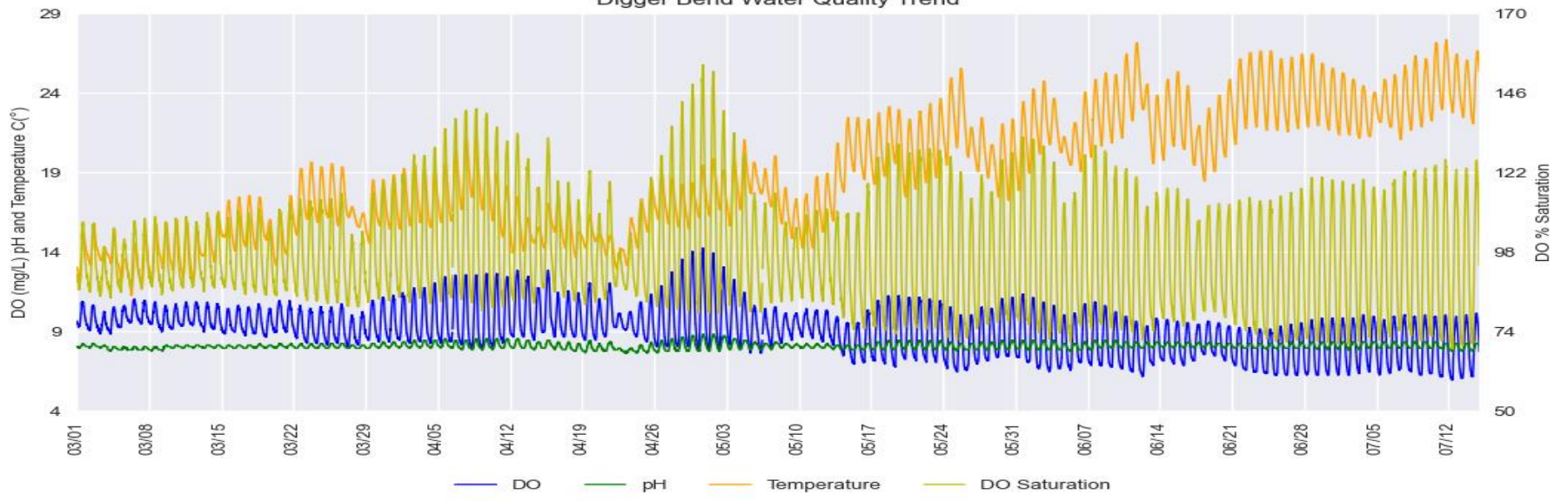


Russian River Water Quality (March 01, 2022 - July 14, 2022)

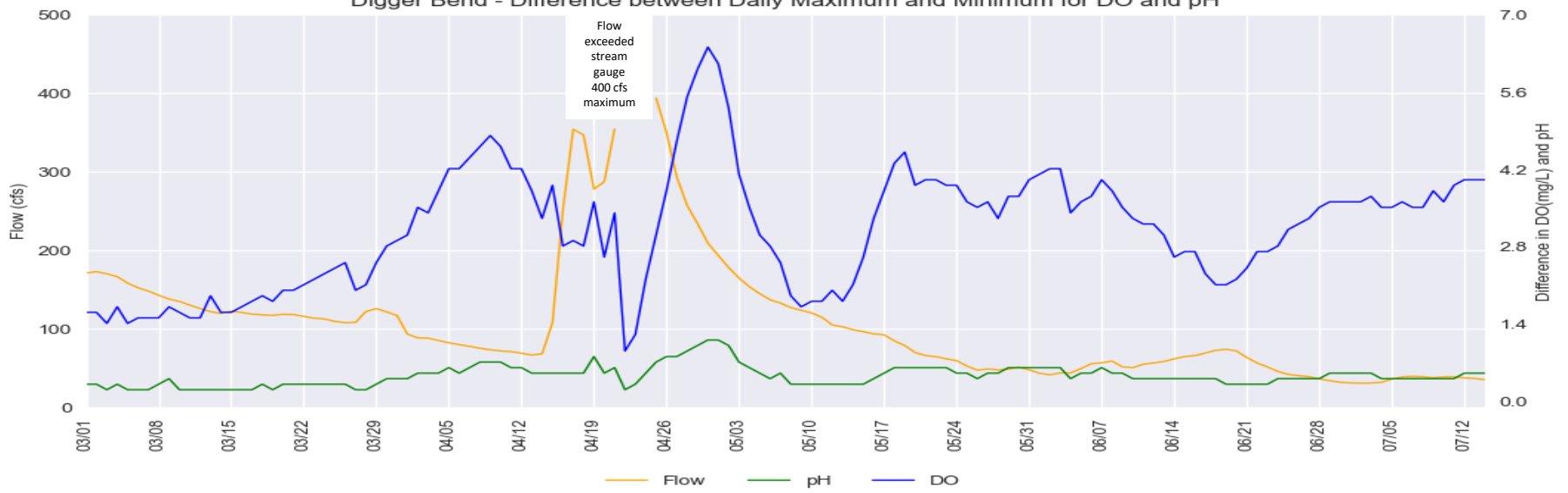
Provisional Data Subject to Revision

Digger Bend

Digger Bend Water Quality Trend

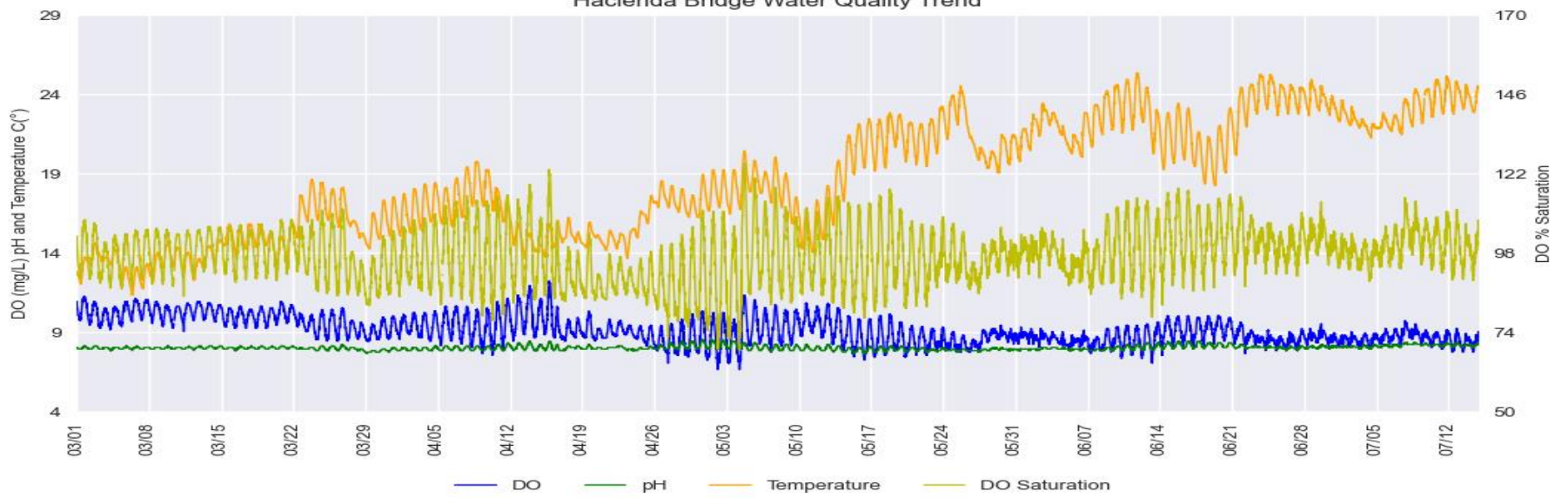


Digger Bend - Difference between Daily Maximum and Minimum for DO and pH

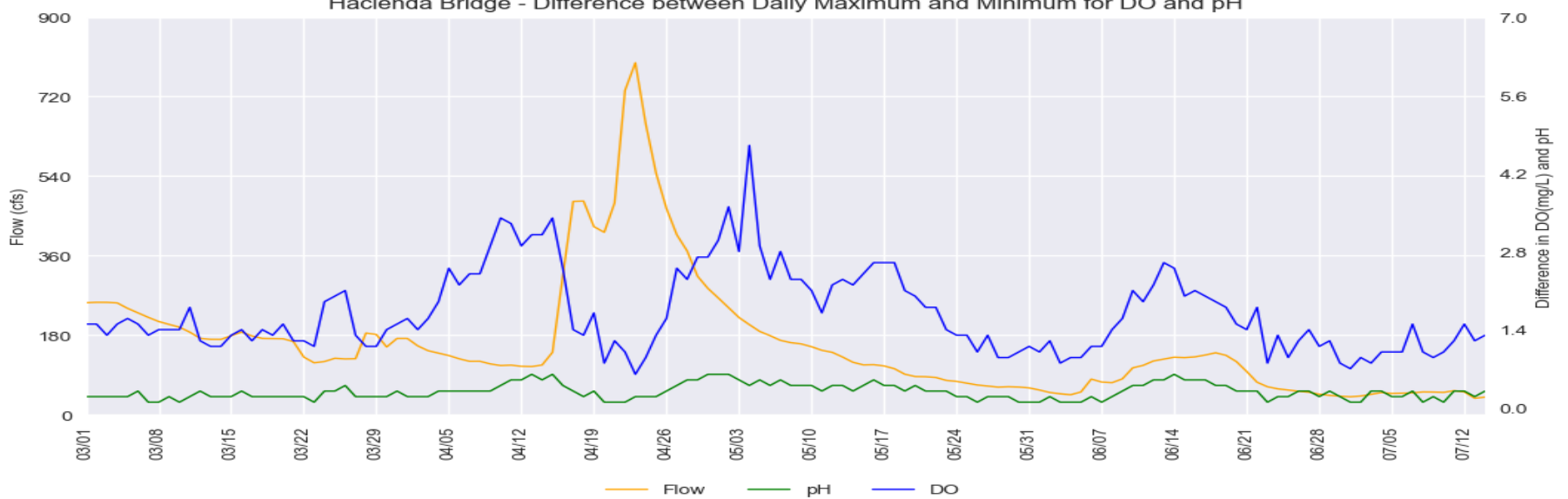


Hacienda Bridge

Hacienda Bridge Water Quality Trend



Hacienda Bridge - Difference between Daily Maximum and Minimum for DO and pH

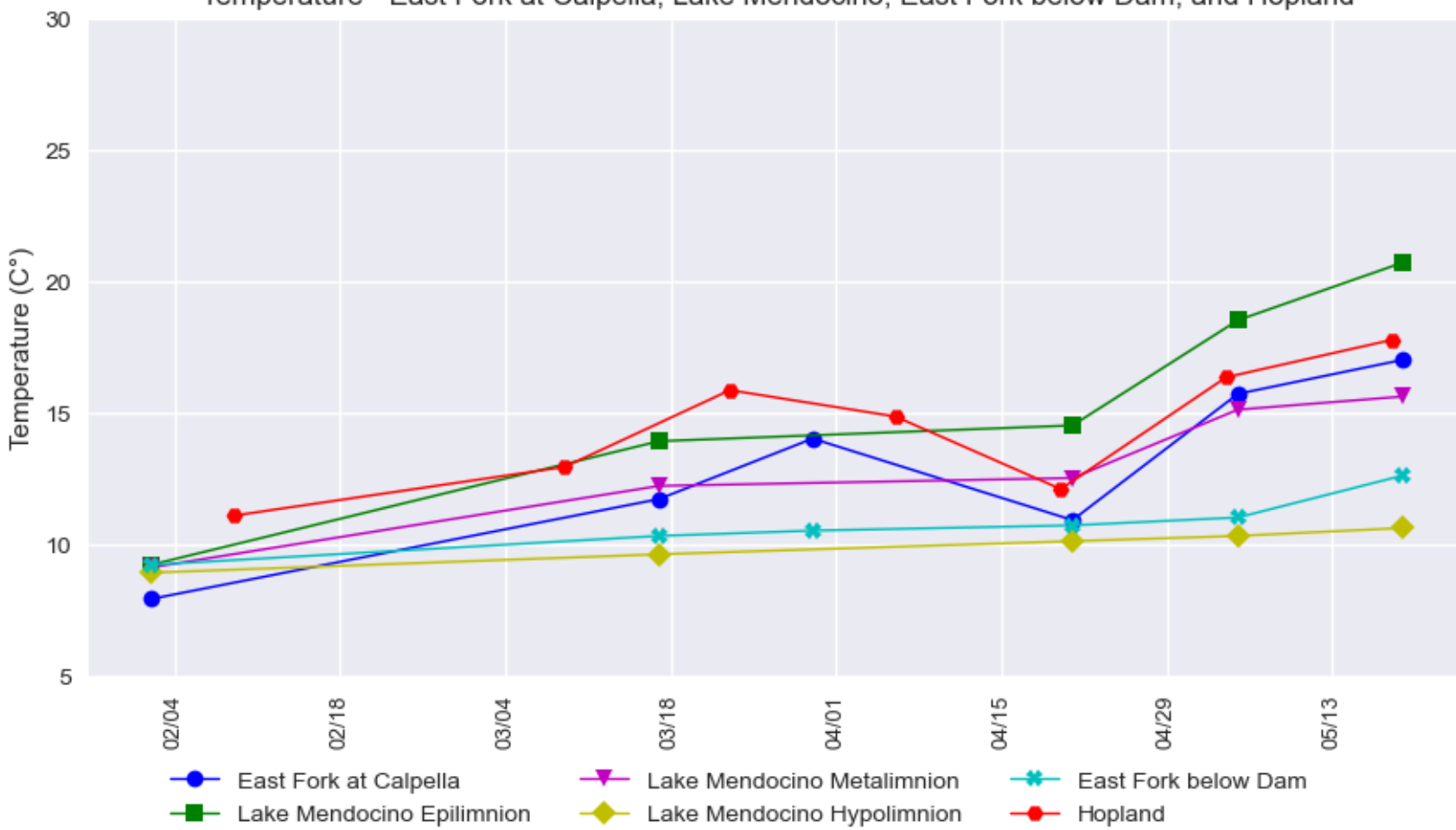


Russian River Water Quality Grab Samples (February 2 - May 19, 2022)

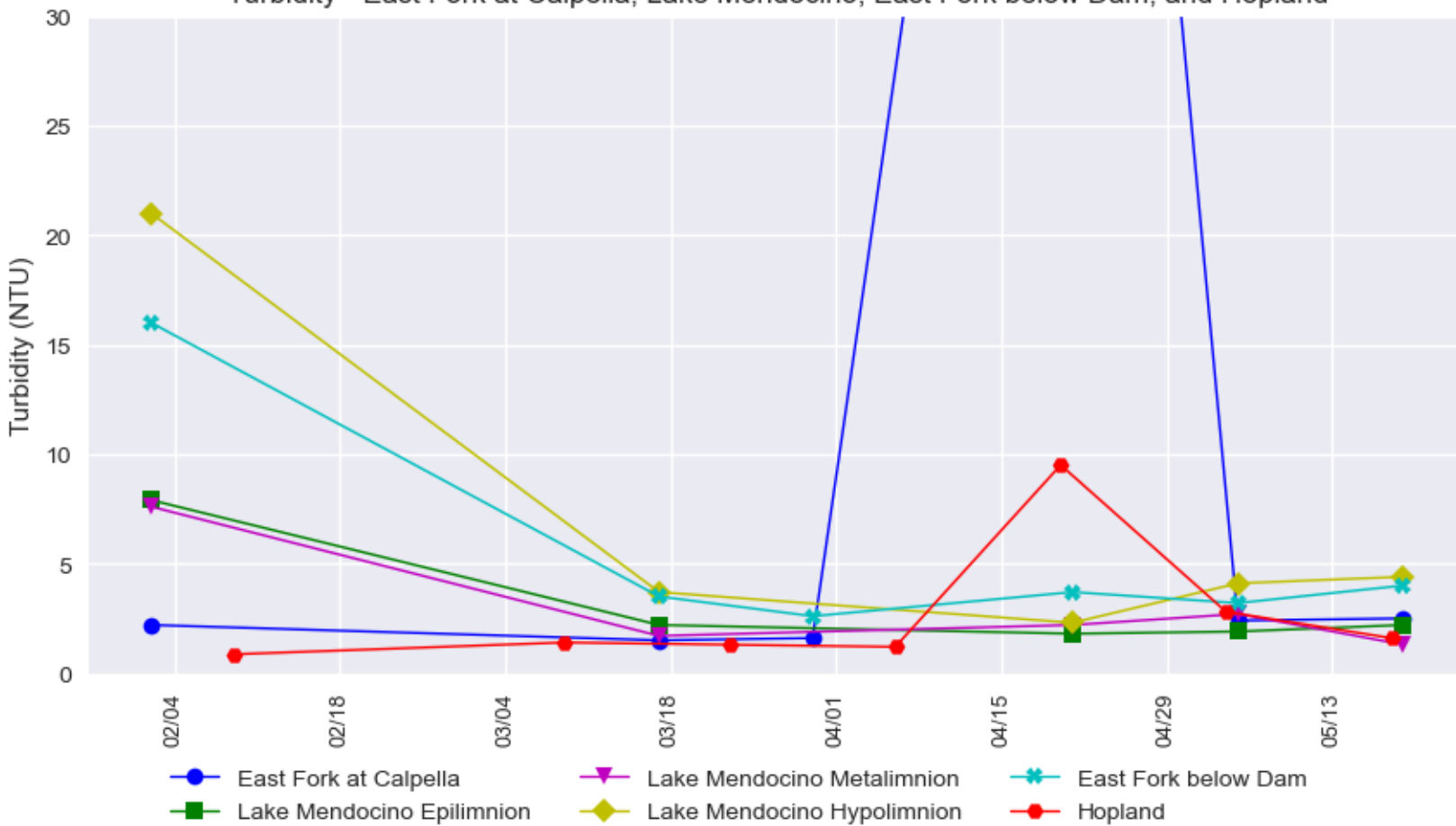
Provisional Data Subject to Revision

Lake Mendocino to Hopland Water Quality

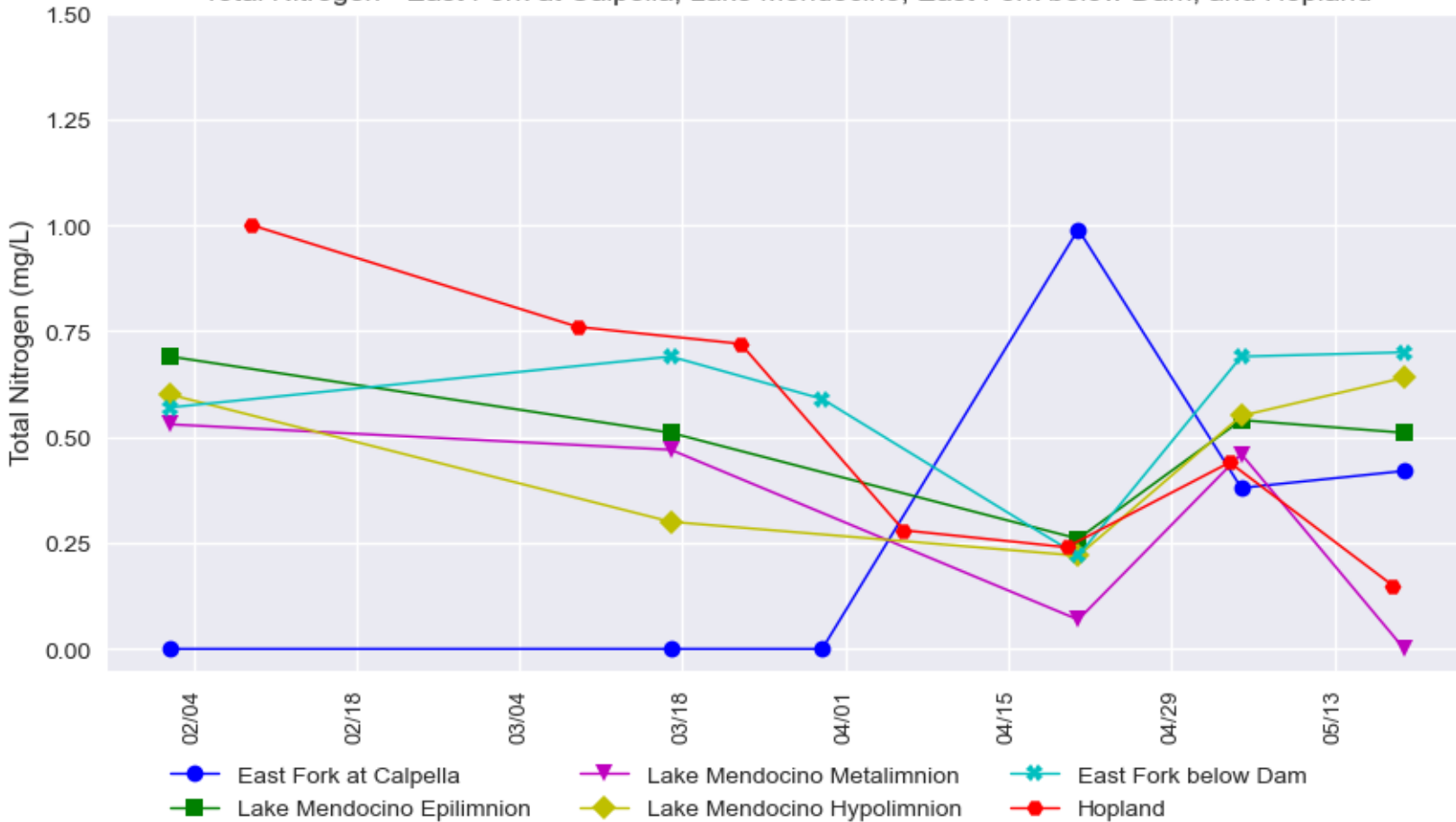
Temperature - East Fork at Calpella, Lake Mendocino, East Fork below Dam, and Hopland



Turbidity - East Fork at Calpella, Lake Mendocino, East Fork below Dam, and Hopland



Total Nitrogen - East Fork at Calpella, Lake Mendocino, East Fork below Dam, and Hopland

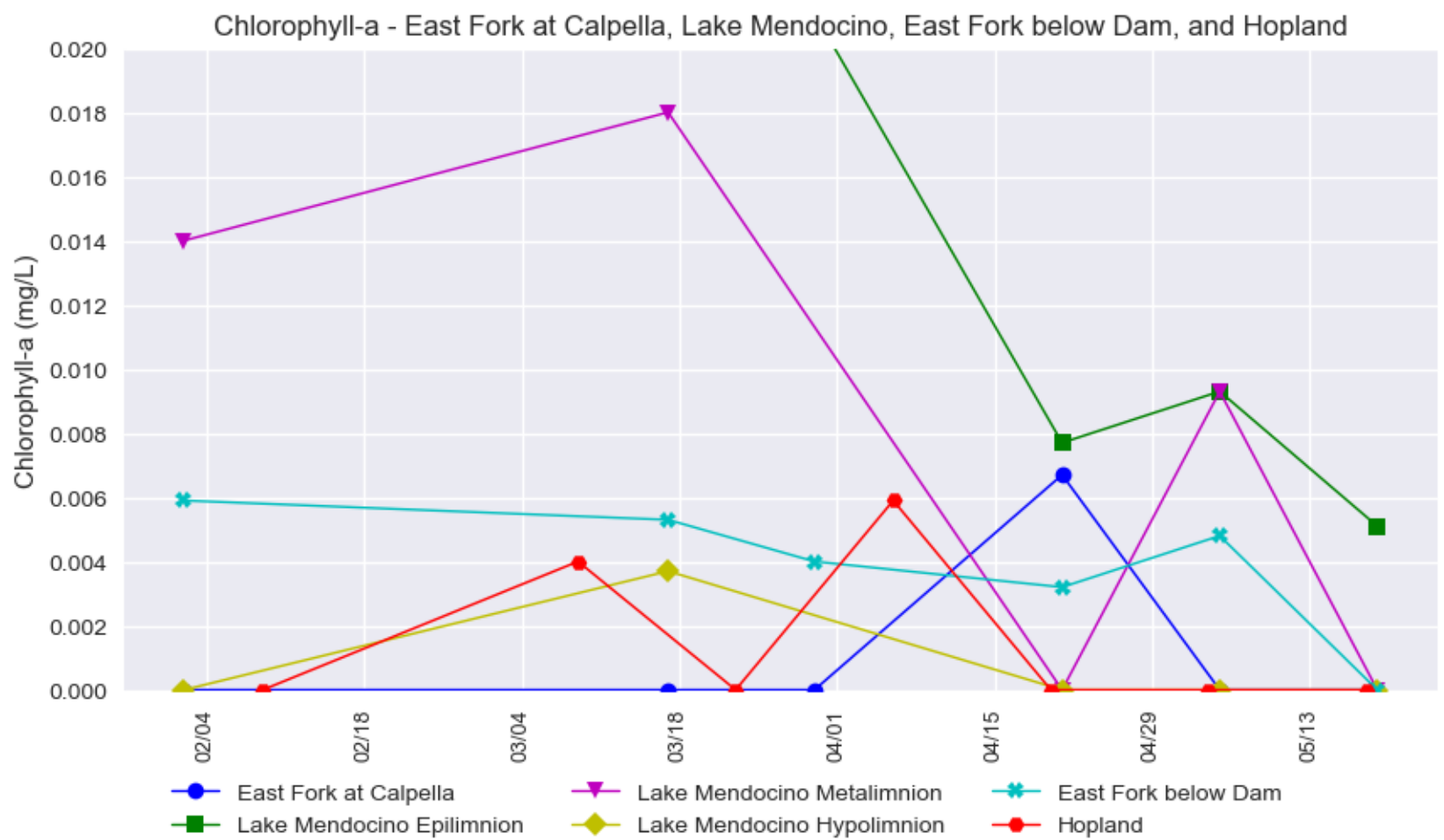
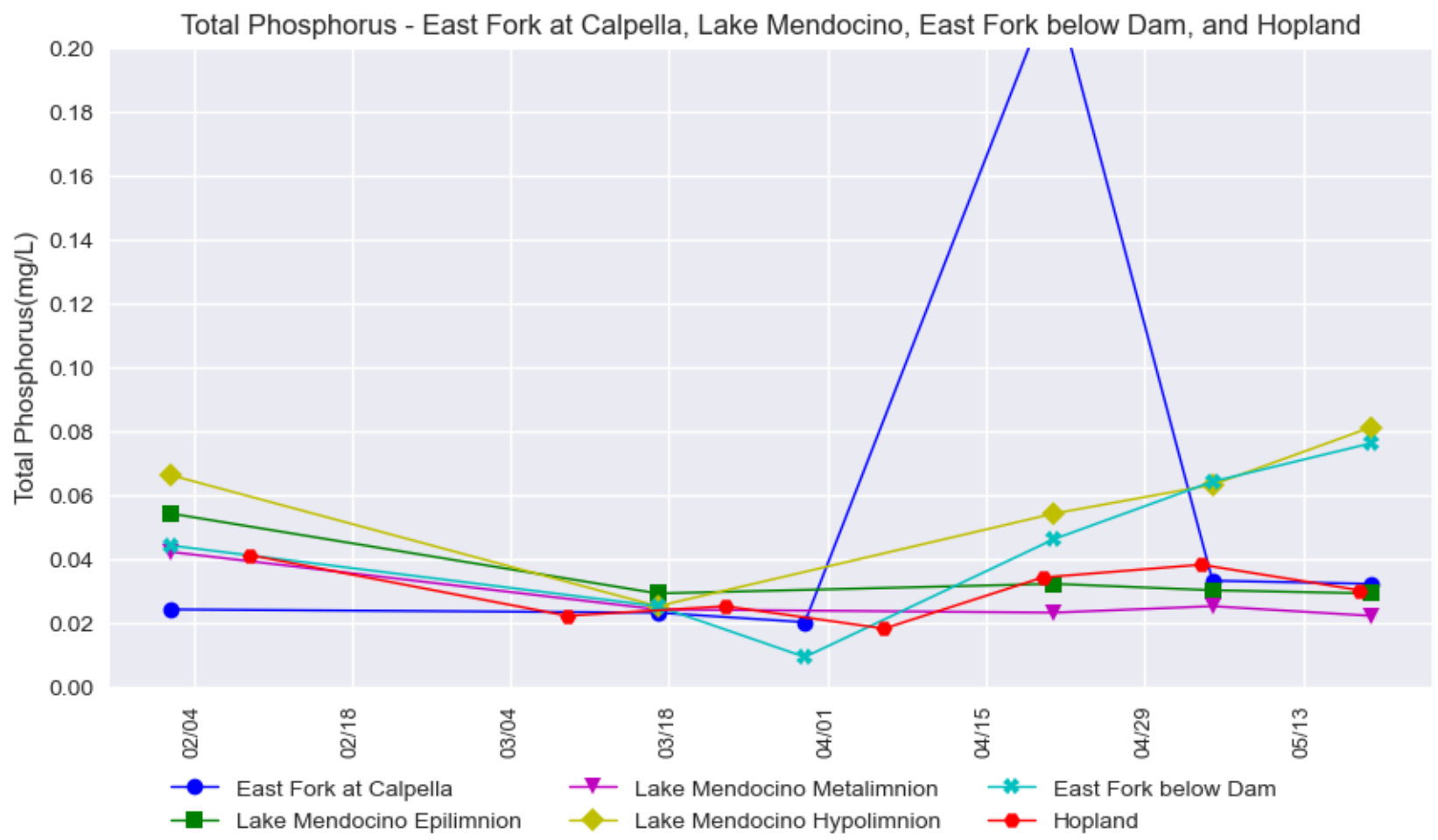


*Each marker in the plot represents a grab sample. The lines are used to help visualize the data, but do not represent a continuous data measurement.

Russian River Water Quality Grab Samples (February 2 - May 19, 2022)

Provisional Data Subject to Revision

Lake Mendocino to Hopland Water Quality



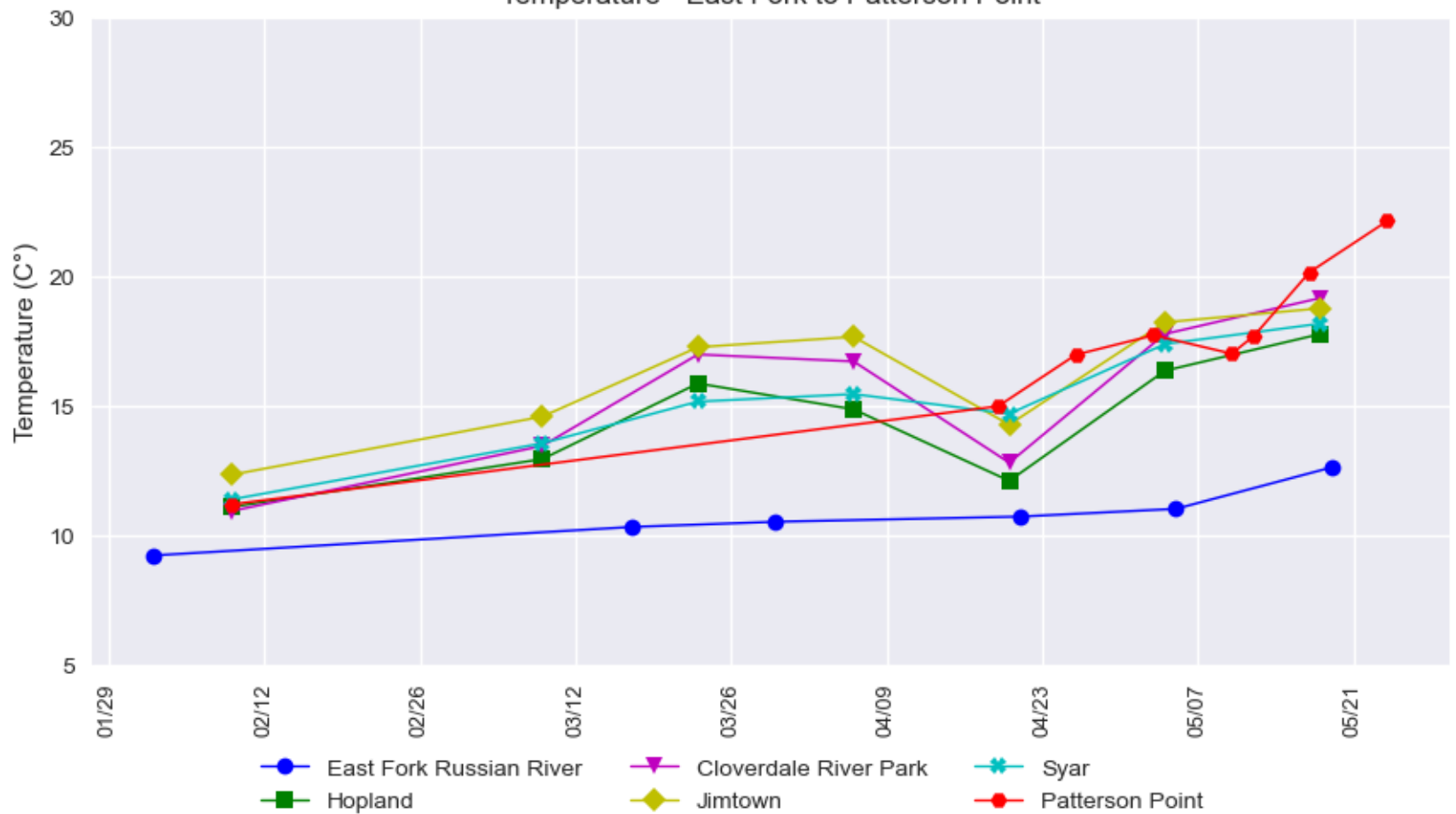
*Each marker in the plot represents a grab sample. The lines are used to help visualize the data, but do not represent a continuous data measurement.

Russian River Water Quality Grab Samples (February 2 - May 19, 2022)

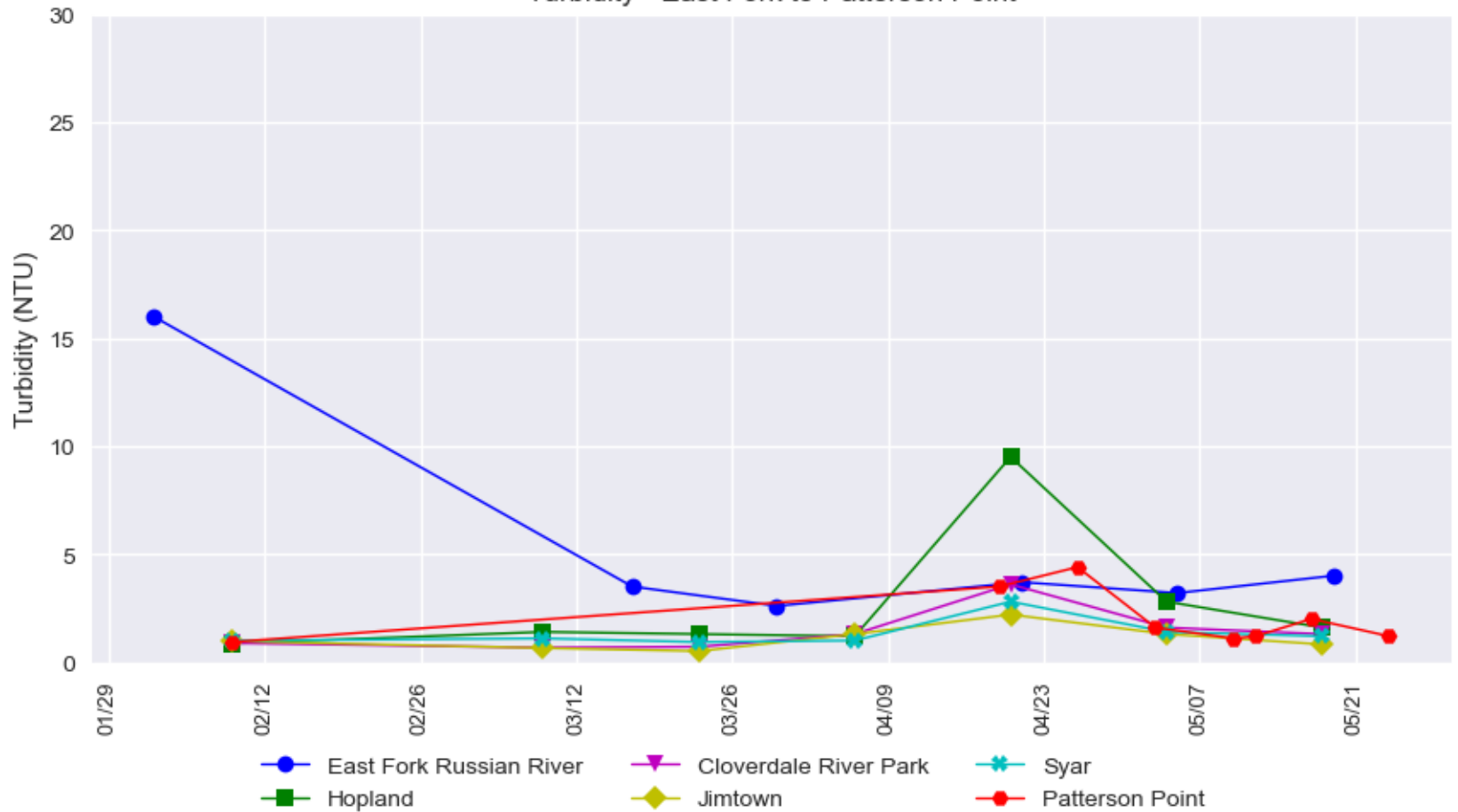
Provisional Data Subject to Revision

East Fork (below Lake Mendocino) to Patterson Point Water Quality

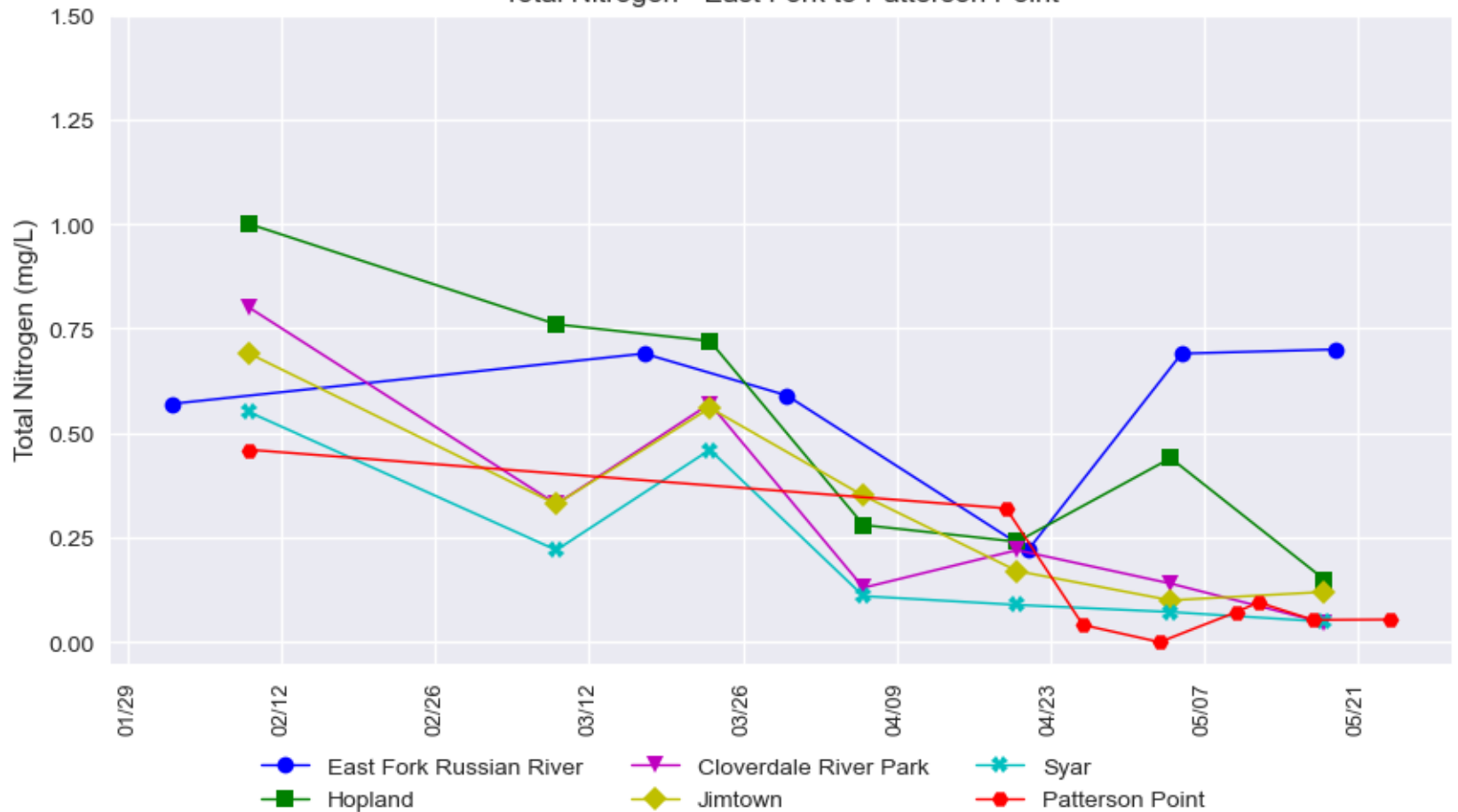
Temperature - East Fork to Patterson Point



Turbidity - East Fork to Patterson Point



Total Nitrogen - East Fork to Patterson Point



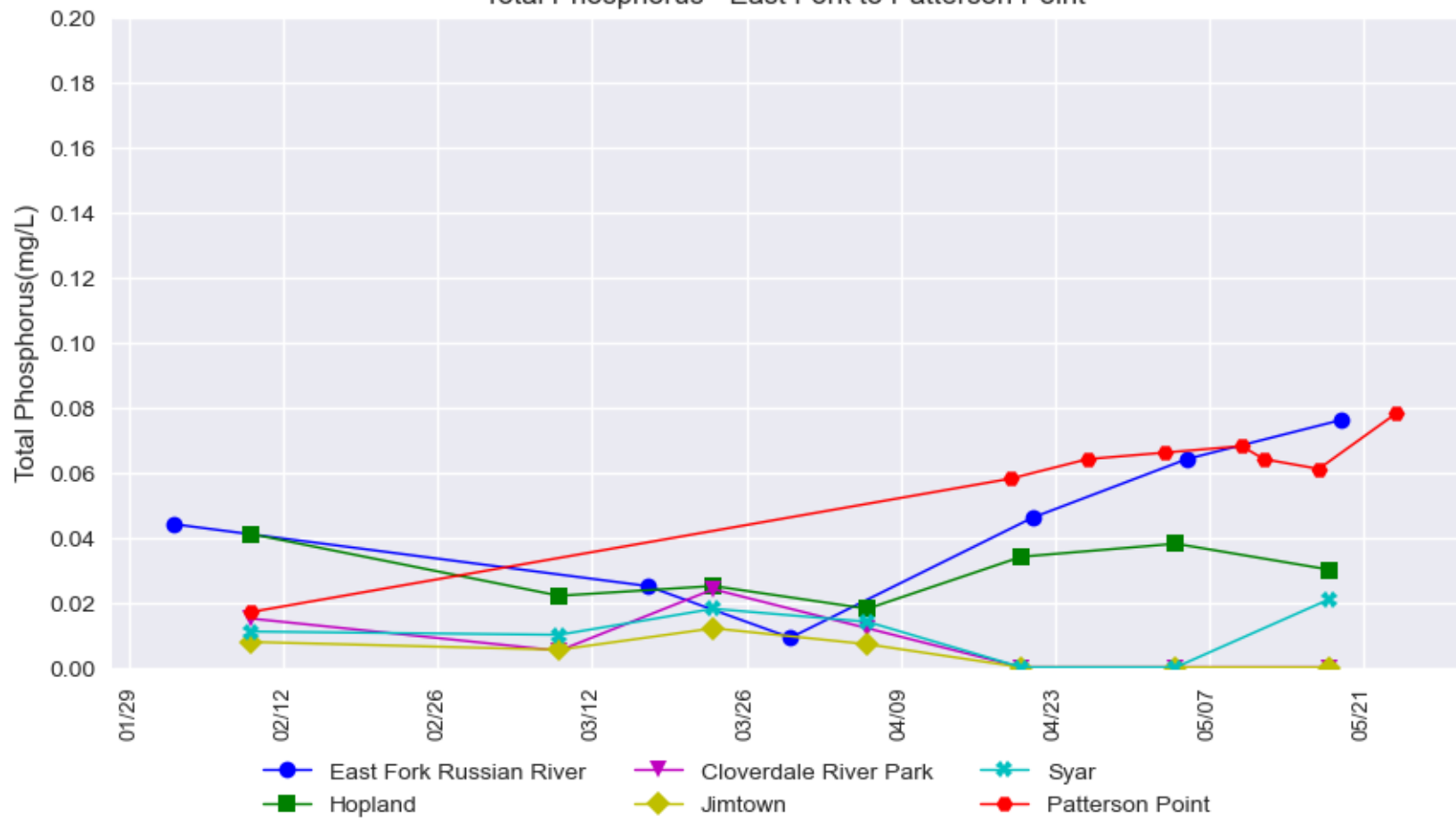
*Each marker in the plot represents a grab sample. The lines are used to help visualize the data, but do not represent a continuous data measurement.

Russian River Water Quality Grab Samples (February 2 - May 19, 2022)

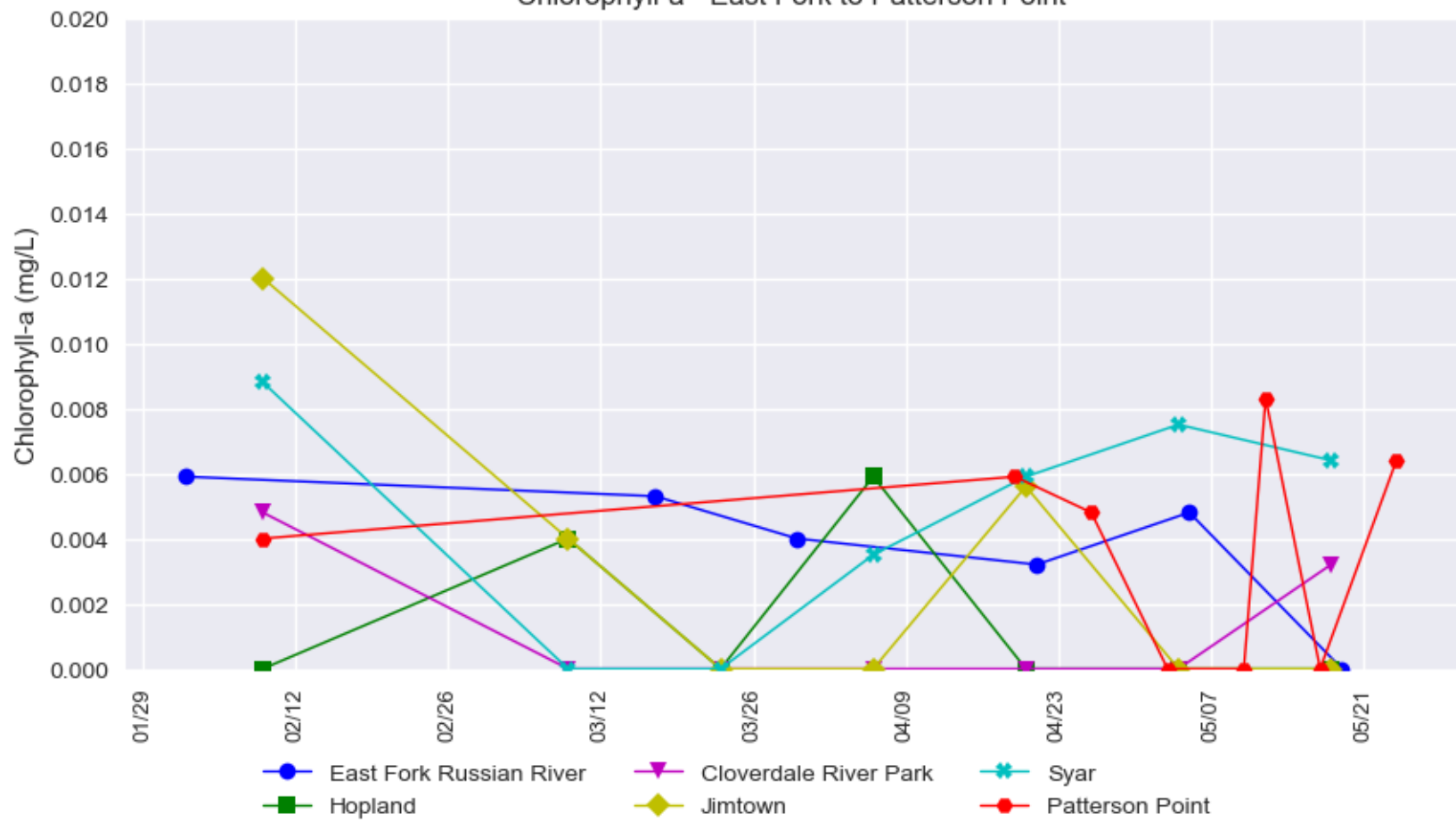
Provisional Data Subject to Revision

East Fork (below Lake Mendocino) to Syar Water Quality

Total Phosphorus - East Fork to Patterson Point



Chlorophyll-a - East Fork to Patterson Point



*Each marker in the plot represents a grab sample. The lines are used to help visualize the data, but do not represent a continuous data measurement.